

**Firstgas**

[firstgas.co.nz](http://firstgas.co.nz)

# High Pressure Pipeline Safety on your Property



Simply scan the Code  
to read this booklet in  
an alternative language.

# Keeping our community safe.

**The safety of people is our number one priority at Firstgas. We rely on you as landowners who may be involved in upcoming works within the pipeline easement on your property, to follow the correct safety and notification process.**

Whenever you are digging on private or public property near gas pipelines, there is a serious risk to life and property if these pipes are damaged. This booklet is a guide to safe working practices when working near our gas pipelines and provides information about the services we have to help you.

If you have any questions regarding the High Pressure Pipelines on your land, please feel free to contact us on **0800 800 393**.

## Contents

<b>About us</b>	<b>05</b>
<b>Pipeline Easement Permits</b>	<b>06</b>
<b>The process to work together</b>	<b>08</b>
<b>How to identify a pipeline</b>	<b>10</b>
<b>What to do if an emergency occurs</b>	<b>12</b>
<b>What Firstgas does if there is an emergency</b>	<b>15</b>
<b>Signs of a natural gas pipeline leak</b>	<b>16</b>
<b>Planting Guide</b>	<b>18</b>
<b>Easements</b>	<b>20</b>
<b>Pipeline maintenance</b>	<b>21</b>
<b>High Pressure Transmission Pipeline Map</b>	<b>22</b>
<b>Health &amp; Safety at Work Act 2015</b>	<b>24</b>
<b>How to contact us</b>	<b>25</b>
<b>The future of gas</b>	<b>26</b>
<b>Our partners</b>	<b>27</b>



**Based in the  
energy rich region  
of Taranaki Firstgas  
supplies gas to  
thousands of  
New Zealanders  
every day.**

## About us

**Firstgas owns and operates more than 2,500 kms of high-pressure gas transmission pipelines, and 4,800kms of gas distribution networks across the North Island.**

The high-pressure pipelines transport natural gas to over 300,000 homes and businesses everyday. We are proud of the contribution gas makes and the important role we play in peoples' lives every day, to ensure their energy needs are met now and into the future.





# Pipeline Easement Permits

Permits are required for all work on the pipeline easement.  
This service is **FREE** of charge for all Landowners.

Dial before you work  
**0800 800 393**



**Operating  
heavy machinery**



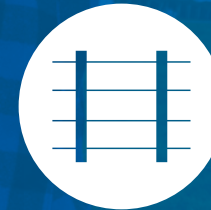
**Removing  
or increasing  
soil cover**



**Drain construction  
& cleaning**



**Planting &  
deep ripping**



**Placement of  
fence posts**



**Under-boring /  
directional drilling**



**Building construction  
& development**



**Tree felling  
& logging**



**All excavation  
works**



**Laying or working  
on other services**



**Construction of  
roads & tracks**



**Blasting**



# The process to work together



1



**Contact beforeUdig  
beforeudig.co.nz**

*(Provide your work site  
information)*



2



**Firstgas response  
provided**

*(To applicant for their  
beforeUdig enquiry)*



3



**Permit/location**

*(Before any work can  
be undertaken)*



4



**Meet on site to  
identify pipeline  
and issue permit  
if required**



5



**Undertake  
approved works**

**Please ensure you only commence work once you have received  
a Pipeline Easement Permit.**

**You could be liable for any damage to the pipeline and the  
surrounding easement if you do not obtain a permit.**



# How to identify a pipeline

## Pipeline Signage

- Danger signs and white painted posts on fences in rural areas
- White triangular warning signs at major river and harbour crossings
- Signs on kerbs, streetlights and power poles in urban areas
- Marker tape may be in the trench line above the pipe

Pipeline signs should never be removed or relocated by anyone other than Firstgas staff. Signs provide the general location of the pipeline but are NOT an alternative to calling Firstgas before excavating.

## Pipeline Depths

High pressure pipelines are normally buried at a minimum depth of approximately 900mm. This can vary, as alterations to the ground cover may reduce or increase depths. Pipelines are usually laid with buried marker tape above the pipe. However, the tape may have shifted over time and some older pipelines may not have marker tape.

Given appropriate notice we will accurately locate the position and depth of the pipelines at no cost to you.

# Never assume you know exactly where the pipeline is located, always contact us.



# What to do if an emergency occurs

## If you hit a gas/petroleum pipe, smell or hear gas escaping:

- Switch off all machinery and remove all sources of ignition, including mobile phones, tablets or lighters
- Move yourself and others to safe area (at least 100 meters upwind of a transmission pipe) until you no longer smell gas
- Call our Firstgas emergency number **0800 734 567**
- Call the Emergency Services **111**
- Please report all damage no matter how minor
- Do not return to the area until you are advised that it is safe by Firstgas or Emergency Services.

**If the pipe is exposed but no leak is evident contact Firstgas.**

**Firstgas 0800 734 567**

**Move away from the site. Natural gas is flammable and explosive.**







## What Firstgas does if an emergency occurs

Firstgas facilities are designed to isolate pipeline segments in the event of an emergency. We have developed a comprehensive Crisis Management Plan to ensure an effective response to pipeline emergencies. Our personnel are trained to work in cooperation with emergency services to manage these events.

### **Report all damage to pipelines**

In the event of any damage, no matter how minor, it is essential that you notify Firstgas. Damage to the coating or denting of the pipe could seriously impact its physical performance, or shorten its life span.

**Repairs must only be made under Firstgas supervision or by a Firstgas representative.**



# Signs of a natural gas pipeline leak

Any of the following could be a sign of a leak:

- Can you hear gas escaping – an unusual hissing or roaring sound coming from the vicinity of the pipeline or associated facility?
- Is there dead or discoloured vegetation around the suspected source site?
- Are you aware of damage to a gas pipe or gas equipment?
- Can you see or hear ground water bubbling or is it frozen?
- Can you see frost or ice on a patch of land?
- Is there a fog-like vapour near the ground?
- Have you heard or seen a gas explosion or fire?
- Can you smell gas?

## Leaks in liquid pipelines

Leaks in a liquid pipeline may show the same signs as those from a gas pipeline, but a petroleum like odour will be present. A small leak may do no more than moisten the surrounding soil, but a large leak may create a pool of liquid.

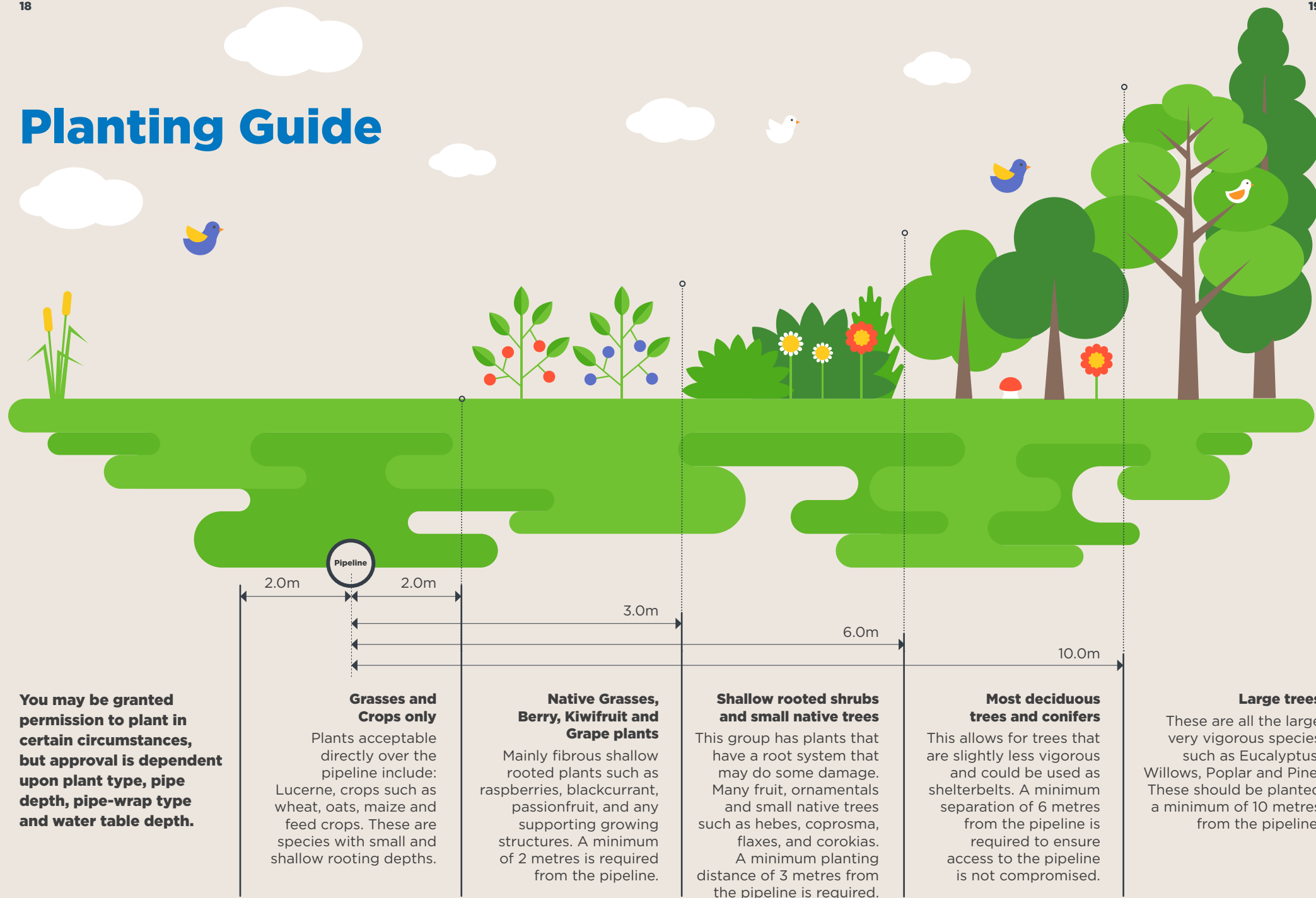
Some liquids are only in liquid form when under pressure in a pipeline. If liquids of this type escape from the pipeline they may change to gas and may be detected by a fog-like vapour near the ground as well as by odour.



**Not all gas in pipelines has that characteristic gas odour.**

**Be cautious and respond immediately if you discover a leak.**

# Planting Guide





## Easements

A pipeline easement is a legal agreement registered on your property title which allows the pipeline owner (Firstgas) the right to access your land to install, operate and maintain the pipeline in a safe way.

The easement terms also outline any restrictions on the easement area. Firstgas will always notify you when we carry out any work on the easement.

## Pipeline maintenance

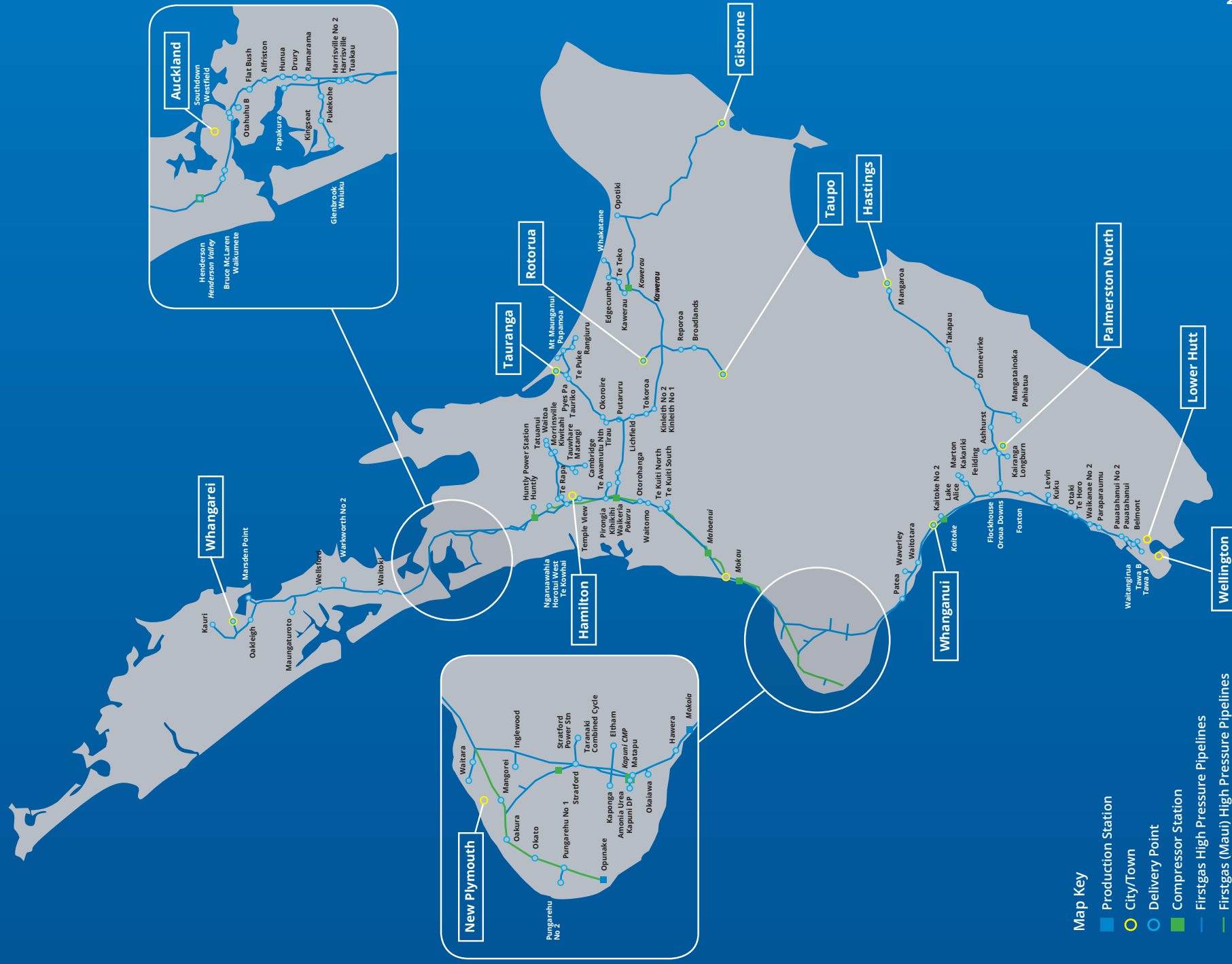
Firstgas utilises many resources to ensure that people and our pipelines are protected from harm. Our pipelines comply with, or exceed national or international codes and standards.

We conduct regular road inspections and air patrols to look for indications of unauthorised activities on the easement, potential hazards, or signs of a leak.



# High Pressure Transmission Pipeline Map

**Never assume you know where the pipeline is. Always contact us first.**





# Health & Safety at Work Act 2015

**The Health and Safety at Work Act 2015 (HSWA) brings new responsibilities for everyone in a workplace.**

Under the HSWA Firstgas is a PCBU (person controlling a business or undertaking). When accessing your property Firstgas must ensure, so far as is reasonably practicable, that others are not put at risk by its work. Firstgas' access rights in relation to your property are specifically prescribed by the easement registered against the title to that property.

A property owner has a duty under the Act to warn authorised visitors of any work-related, out-of-the-ordinary hazards that may cause them serious harm. Authorised visitors are anyone legally allowed to be on the property, such as Firstgas representatives in emergency situations, but only if they have notified the property owner that they are coming prior to the visit.

## How to contact us

**For more information, pipeline easement permit/enquiries and safety information:**

- Call 0800 800 393
- Email [locations@firstgas.co.nz](mailto:locations@firstgas.co.nz)
- Write to Firstgas  
Private Bag 2020  
New Plymouth 4342
- Visit [firstgas.co.nz](http://firstgas.co.nz)

### In an Emergency

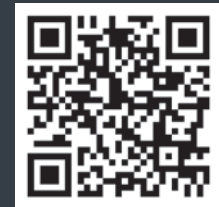
Call Firstgas on **0800 734 567** then the Fire Service on **111**.

### If you have a complaint

Please contact our free internal complaints service on **0800 800 393**. If we are unable to resolve your complaint to your satisfaction, you can contact the free and independent Electricity and Gas Complaints Commissioner on **0800 223 340** or visit [egcomplaints.co.nz](http://egcomplaints.co.nz).

### Alternative Language

To view this brochure in an alternative language, please scan the QR code below:



# The future of gas

**We are part of Firstgas Group and are committed to helping New Zealand achieve its target of net zero carbon emissions by 2050.**

Firstgas has spent two years investigating the possibilities of low carbon, renewable gas, such as hydrogen and biogas, which are already being tested in New Zealand and are well-advanced overseas. In the future, our aim is to continue using our existing pipeline networks and distribution channels to distribute clean, renewable gas.

# Our partners

**This booklet has been prepared by Firstgas Limited for our pipelines, and the pipeline easements we manage for our clients.**

- Liquigas Limited
- New Zealand Energy Corporation
- NZOSL (New Zealand Oil Services Limited)
- Channel Terminal Services Limited (CTS)
- OMV Taranaki Limited
- Todd Petroleum Mining Company Limited
- Wiri Oil Services Limited





# Firstgas

**Head Office**

42 Connett Road  
Bell Block  
New Plymouth 4312

**Mail to**

Private Bag 2020  
New Plymouth Central 4340

**Phone**

0800 Firstgas  
(0800 347 784)  
Land and Planning Team  
0800 800 393